

# CERTIFICATE OF LOCATION OF GOVERNMENT CORNER

NORTH QUARTER Corner of Section 06, Township 107N, Range 39W

5th Principal Meridian, State of Minnesota, County of MURRAY

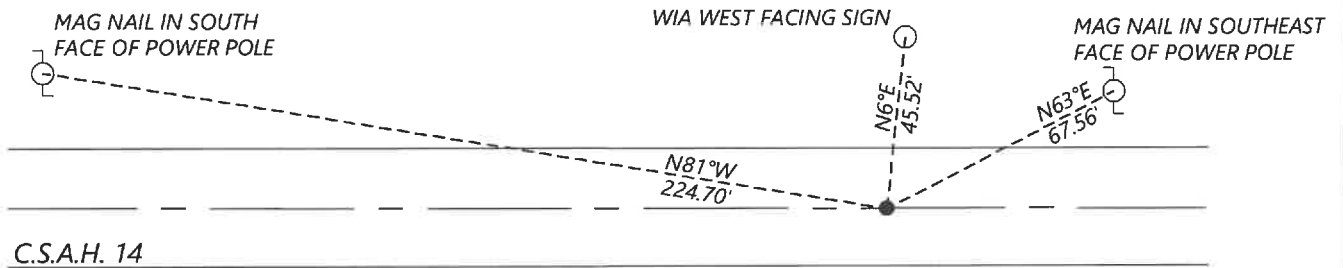
At the corner location shown on the sketch:

On 11/03/2020 found a 6x6" CONCRETE MONUMENT WITH "X" SCRIBED ON TOP. 0.2FT BELOW GRADE.  
DATE

left monument as found       lowered monument       removed monument (explain)

On 12/16/2020 placed a NO. 4 REBAR WITH CAP LS 45874 ON NORTH SIDE OF MONUMENT, DOWN 0.5FT  
DATE

### SKETCH OF REFERENCE TIES



N.T.S.

Statement of evidence for this corner location is on back of this page.

I hereby certify that this document was researched and prepared by me or under my direct supervision and that I am a licensed Land Surveyor under the laws of the State of Minnesota.

Signature [Handwritten Signature]

Date 6/16/2021 License No. 45874

Title:

- Land Surveyor       Professional Engineer
- County Surveyor       County Engineer

OFFICE OF THE COUNTY RECORDER

County of Murray

I hereby certify that this document was filed in the Co.

Recorder's office at \_\_\_\_\_ M. on the \_\_\_\_\_ day of \_\_\_\_\_ A.D. 20 \_\_\_\_\_

County Recorder [Handwritten Signature: Karen Brown]  
by JUN 22 2021, Deputy

DOCUMENT NO. \_\_\_\_\_

Statement of Evidence:

North Quarter Corner of Section 06, Township 107 North, Range 39 West, 5th Principal Meridian, Murray County, Minnesota.

*No GLO Notes.*

*Undated, Survey record in Section 6 shows a concrete stone at the corner.*

*Undated, Survey record for Section 31 does not indicate what was found or set at the corner, but does show a distance of 2646.0ft to the Southeast corner of Section 31 and 2467.8ft to the Southwest corner of Section 31.*

*2020 December, Westwood Professional Services excavated with a backhoe and found a concrete monument down 0.5ft. I set a  $\frac{1}{2}$ " rebar and cap LS 45874 on the North side as a witness and to aid in future recovery of the monument.*

Analysis of the recovered data, field evidence and survey measurements, indicates that the monument found is the correct perpetuation of this corner. For additional information concerning this corner please contact Westwood Professional Services.